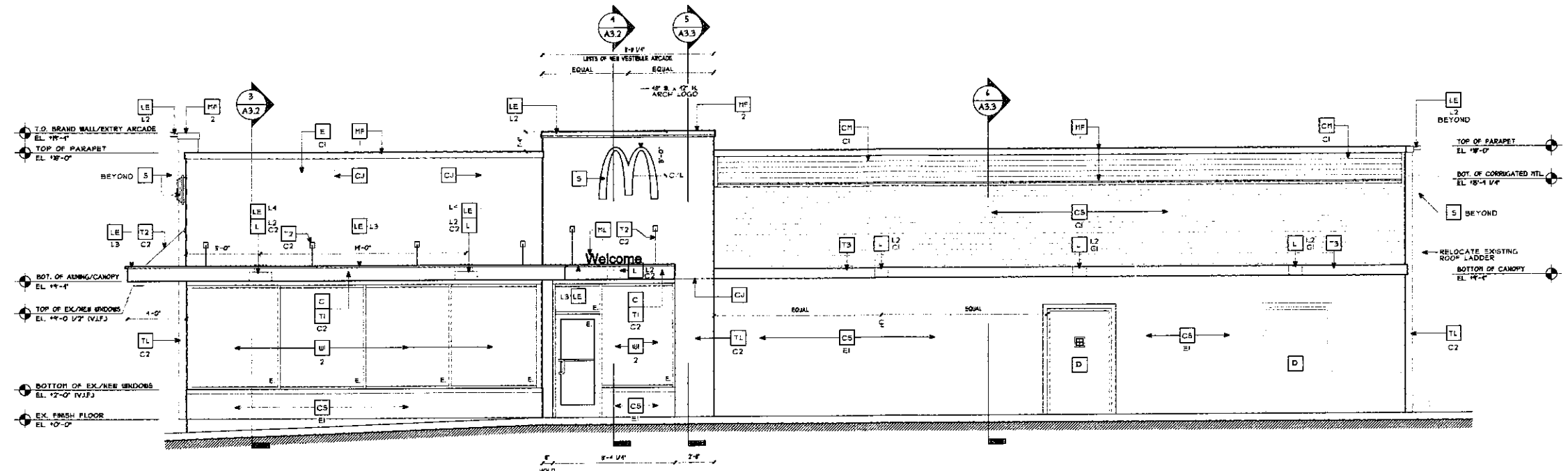
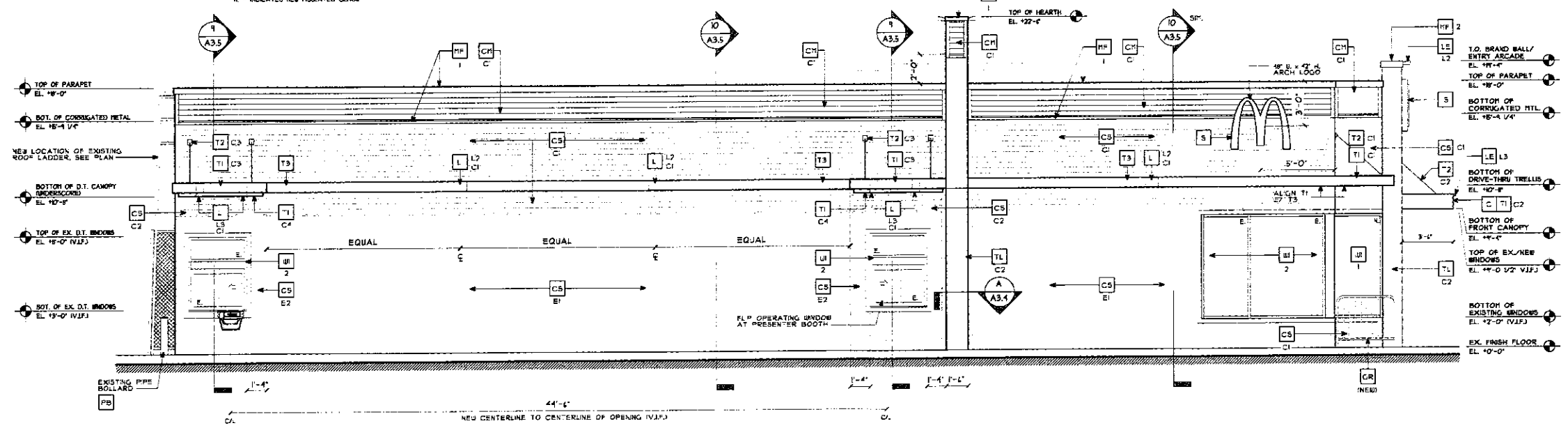


PROJECT DATE & TIME: 1/15/17 4:21 PM
 FILE PATH & NAME: \\MACDATA\DATA\PROJECTS\MCDONALD\04-M-13005\M-1304-A2-01-EX-02-17-MCD5 F MAIN-MIDDLETOWN RI



1 RIGHT SIDE ELEVATION
 SCALE: 1/4"=1'-0"
 NOTE:
 T - INDICATES NEW TEMPERED GLASS
 E - INDICATES EXISTING TO REMAIN
 N - INDICATES NEW INSULATED GLASS



2 LEFT SIDE ELEVATION
 SCALE: 1/4"=1'-0"
 NOTE:
 T - INDICATES NEW TEMPERED GLASS
 E - INDICATES EXISTING TO REMAIN
 N - INDICATES NEW INSULATED GLASS

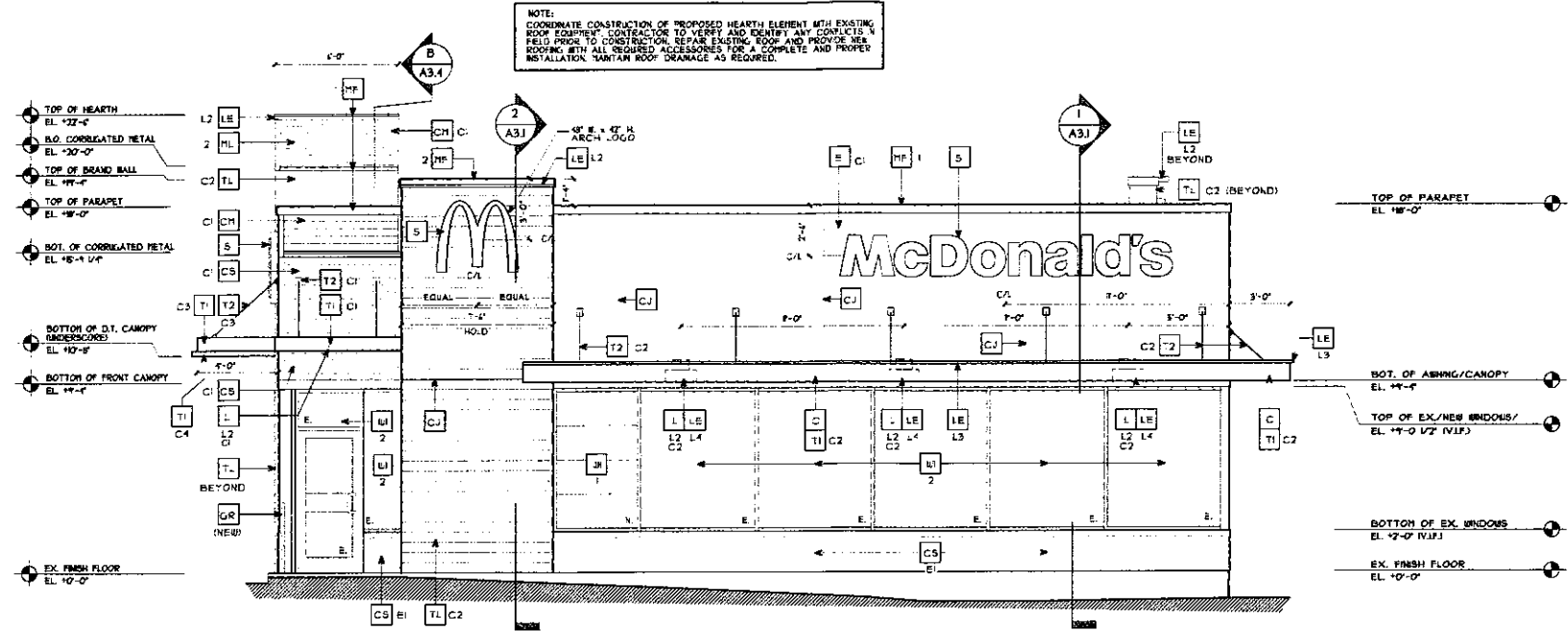
NOTE:
 ALL CONTROL JOINTS INSTALLED PER MANUFACTURER'S RECOMMENDATIONS. LOCATIONS TO BE COORDINATED BY ARCHITECT OF RECORD AND SUBMITTED FOR BRAND REVIEW.

SIGNAGE SUPPORT NOTE:
 JOINTBODY FASCIA SIGN WALL SUPPORTS TO BE VERIFIED WITH MCDONALD'S AREA CONSTRUCTION MANAGER AND COORD. WITH SIGN MANUFACTURER.

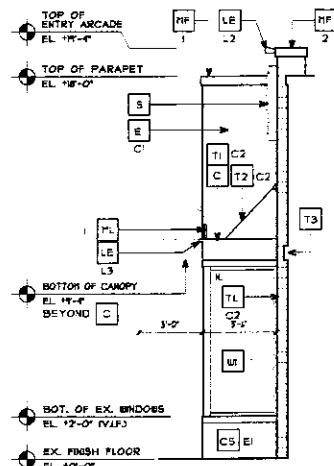
KEY NOTES:

- | | | | |
|---|--|--|--|
| <p>BR FACE BRICK</p> <p>XX TYPE/COLOR:
 EI = EXISTING UNPAINTED MASONRY
 B = PAINTED MASONRY / PAINT: CHELSEA GREY 4HC-18</p> <p>C ALUM. CANOPY FASCIA SYSTEM
 COLOR: WHITE</p> <p>CJ CONTROL JOINT</p> <p>CH CORRUGATED METAL PANEL - SEE DETAIL
 XX TYPE/COLOR:
 C1 = "CITYSCAPE" BY METAL-ERA</p> <p>CS CLAPBOARD SIDING
 XX TYPE/COLOR:
 E1 = EXISTING SIDING / PAINT: BR CHELSEA GREY 4HC-18
 E2 = EXISTING SIDING / PAINT: BR IRON MOUNTAIN 4204-30
 C1 = NEW SIDING / PAINT: BR CHELSEA GREY 4HC-18
 C2 = NEW SIDING / PAINT: BR IRON MOUNTAIN 4204-30</p> <p>D EXISTING HOLLOW METAL DOOR - PAINT TO MATCH COLOR OF SURROUNDING MATERIAL</p> | <p>E EXTERIOR INSULATION FINISH SYSTEM (EIFS) INSULATION PLUS 1/2" DRYVIT OR EQUAL. IMPACT ZONES: PAVER 20" X 20" BOLD SPAC. WITH ASSEMBLY FOR EIFS. AND AS WITH 1/2" OF GRADE FASH. HYDROPHOBIC TEXTURE: SANDPBLE</p> <p>GR GUARD RAIL</p> <p>L LIGHT FIXTURE - SEE ELECTRICAL DRAWINGS
 XX TYPE:
 L1 = UP AND DOWN SCENCE
 L2 = DOWN ONLY SCENCE
 L3 = RECESSED DOWN FIXTURE
 COLOR:
 C1 = SILVER
 C2 = WHITE</p> <p>LB ACCENT LIGHTING - SEE ELECTRICAL
 XX TYPE:
 L1 = UP AND DOWN FIXTURE
 L2 = DOWN ONLY FIXTURE
 L3 = INTEGRAL CANOPY FIXTURE
 L4 = FLOOD LIGHT - COORDINATE MOUNTING POSITION NOT TO ALIGN WITH CANOPY TIE-BACKS</p> | <p>HF METAL FASCIA - SEE SECTIONS AND DETAILS
 X TYPE:
 1 = PRE-FAB. ANCHOR-TITE FASCIA. COLOR: CITYSCAPE
 2 = PRE-FAB. CUSTOM ARCADE FASCIA. COLOR: CITYSCAPE</p> <p>ML METAL LETTERING - BY OTHERS
 X TYPE:
 1 = "WELCOME", COLOR: SILVER
 2 = "24 HOURS" METAL ARCH. COLOR: PANTONE 423C</p> <p>MS EXISTING METAL SCREEN</p> <p>PB PIPE BOLLARD - PAINTED YELLOW</p> <p>PT PASS-THRU CON. COLLECTOR - OPTIONAL (RTHC)</p> <p>RO ROOF DRAIN OVERFLOW PIPE
 PAINT TO MATCH SURROUNDING MATERIAL.</p> <p>S MCDONALD'S SIGNAGE BY OTHERS - UNDER SEPARATE PERMIT. SEE SIGNAGE SUPPORT NOTE ON THIS SHEET.</p> <p>T ALUMINUM TRELLIS (PROVIDED BY MCDONALD'S AND INSTALLED BY GC)
 XX COLOR:
 C1 = CITYSCAPE
 C2 = WHITE
 C3 = CHARCOAL
 C4 = GOLD</p> | <p>T2 ALUMINUM TRELLIS TIE-BACK
 XX COLOR:
 C1 = CITYSCAPE
 C2 = WHITE
 C3 = CHARCOAL</p> <p>T3 ALUMINUM TRELLIS 2x6 WALL FASCIA SYSTEM
 X TYPE:
 TL WALL TILE - EUROBEST E-WOOD COLLECTION
 SEE: 4" X 36" INSTALL AS 1/2" RAINING BOND
 XX COLOR:
 C1 = RP - OAK
 C2 = RH - BLACK</p> <p># WATERPROOFING SETTING MATERIAL AND GROUT: BY "APE" (GROUT COLOR: ULTRA COLOR PLUS - 4T CHARCOAL GROUT WIDTH 1/8" TO 3/16")</p> <p>OUTSIDE CORNER STRIPS BY: SCHLITZER SYSTEMS LP. CONTACT: EARL TACUS, 581 324-3400. END OF TILE FIELD ABOVE ROOF AT ARCADE. CORNER TRIM: RONDEC ROOFTOP (DARK ANTRACITE) ALUMINUM. JOINT: DLEX DABDOGG (BLACK)</p> <p>W EXTERIOR WINDOW ASSEMBLY
 1 = NEW STOREFRONT AND GLAZING - SEE ASSEMBLY NOTES
 2 = EXISTING WINDOW TO REMAIN</p> |
|---|--|--|--|

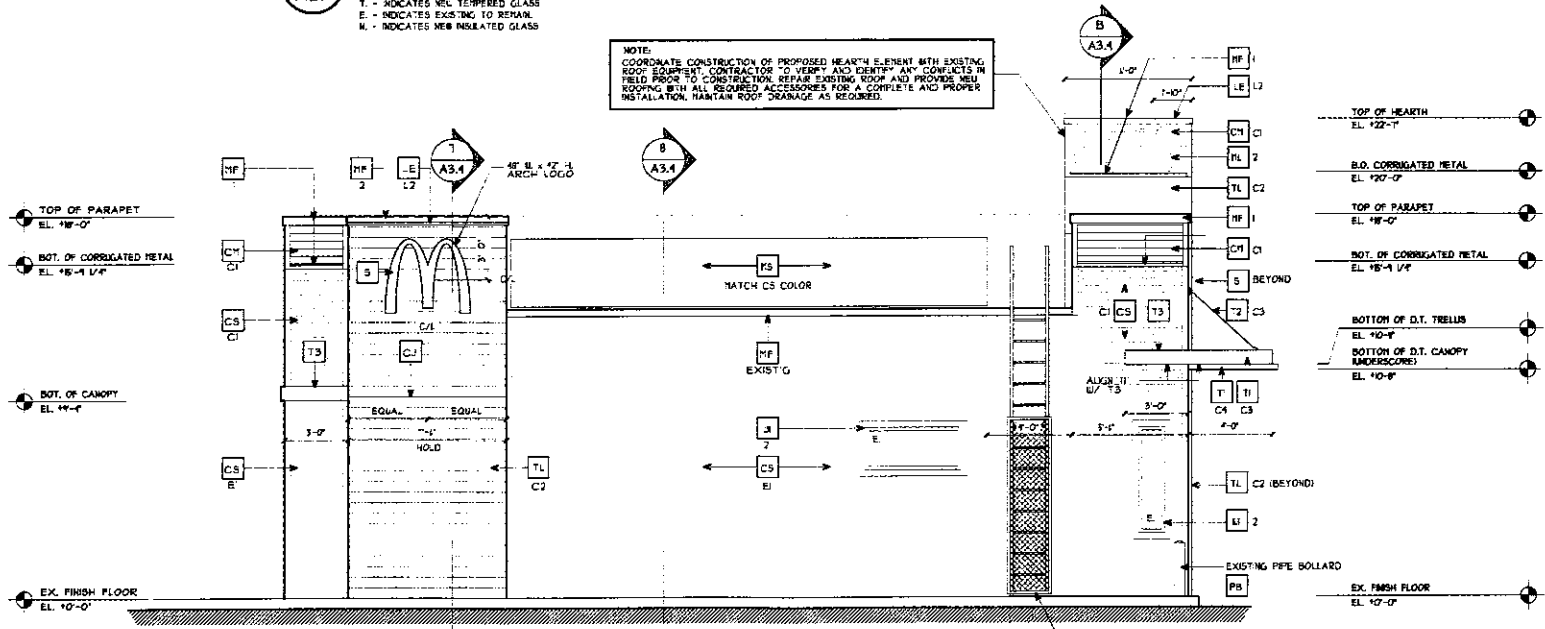
	DRAWN BY: D.A.C. CHECKED BY: L.R.D. DATE DRAWN: 12/09/16	DATE ISSUED: AS NOTED SCALE: M-1500	NO. DATE 1 2 3 4 5 6 7	PROJECT NO.: M-1500
EXTERIOR ELEVATIONS				
McDonald's USA, LLC				
288 East Main Road Middletown, Rhode Island 02842				
A2.0				



FRONT ELEVATION
 SCALE: 1/4"=1'-0"



PARTIAL REAR ELEVATION
 SCALE: 1/4"=1'-0"



REAR ELEVATION
 SCALE: 1/4"=1'-0"

NOTE:
 COORDINATE CONSTRUCTION OF PROPOSED HEARTH ELEMENT WITH EXISTING ROOF EQUIPMENT. CONTRACTOR TO VERIFY AND IDENTIFY ANY CONFLICTS IN FIELD PRIOR TO CONSTRUCTION. REPAIR EXISTING ROOF AND PROVIDE NEW ROOFING WITH ALL REQUIRED ACCESSORIES FOR A COMPLETE AND PROPER INSTALLATION. MAINTAIN ROOF DRAINAGE AS REQUIRED.

NOTE:
 T - INDICATES WGL TEMPERED GLASS
 E - INDICATES EXISTING TO REMAIN
 M - INDICATES NEW INSULATED GLASS

NOTE:
 COORDINATE CONSTRUCTION OF PROPOSED HEARTH ELEMENT WITH EXISTING ROOF EQUIPMENT. CONTRACTOR TO VERIFY AND IDENTIFY ANY CONFLICTS IN FIELD PRIOR TO CONSTRUCTION. REPAIR EXISTING ROOF AND PROVIDE NEW ROOFING WITH ALL REQUIRED ACCESSORIES FOR A COMPLETE AND PROPER INSTALLATION. MAINTAIN ROOF DRAINAGE AS REQUIRED.

NOTE:
 ALL CONTROL JOINTS INSTALLED PER MANUFACTURER'S RECOMMENDATIONS. LOCATIONS TO BE COORDINATED BY ARCHITECT OF RECORD AND SUBMITTED FOR BRAND REVIEW.

SIGNAGE SUPPORT NOTE:
 UNIBODY FASCIA SIGN MOUNT SUPPORTS TO BE VERIFIED WITH MCDONALD'S AREA CONSTRUCTION MANAGER AND COORD. WITH SIGN MANUFACTURER.

KEY NOTES:

- BR FACE BRICK
- XX TYPE/COLOR
- EI = EXISTING IMPARTED MASONRY
- B = PAINTED MASONRY / PAINT: CHELSEA GREY HMC-16
- C ALUM. CANOPY FASCIA SYSTEM
- CS CONTROL JOINT
- CH CORRUGATED METAL PANEL - SEE DETAIL
- XX TYPE/COLOR
- CI = CITYSCAPE BY METAL-ERA
- CS CLAPBOARD SIDING
- XX TYPE/COLOR
- EI = EXISTING SIDING / PAINT: BY CHELSEA GREY HMC-16
- E2 = EXISTING SIDING / PAINT: BY IRON MOUNTAIN 1234-30
- C1 = NEW SIDING / PAINT: BY CHELSEA GREY HMC-16
- C2 = NEW SIDING / PAINT: BY IRON MOUNTAIN 1234-30
- D EXISTING HOLLOW METAL DOOR - PAINT TO MATCH COLOR OF SURROUNDING MATERIAL
- E EXTERIOR INSULATION FINISH SYSTEM (EIFS): OUTSULATION PLUS RD. BY DRYVIT OR EQUAL. HIGH IMPACT ZONE. WALLS TO BE WITH HIGH IMPACT MESH ASSEMBLY FOR EX. AREAS WITH 5" OF LEAD. FINISH: HYDROPHOBIC TEXTURE SANDPAPER
- COLOR:
 C1 = BENJAMIN MOORE INC-162 CHELSEA GREY
 C2 = BENJAMIN MOORE 1234-30, IRON MOUNTAIN
- GR GUARD RAIL
- L LIGHT FIXTURE - SEE ELECTRICAL DRAWINGS
- XX TYPE:
 L1 = UP AND DOWN SCIENCE
 L2 = DOWN ONLY SCIENCE
 L3 = RECESSED DOWN FIXTURE
- COLOR:
 C1 = SILVER
 C2 = WHITE
- LE ACCENT LIGHTING - SEE ELECTRICAL
- XX TYPE:
 L1 = UP AND DOWN FIXTURE
 L2 = DOWN ONLY FIXTURE
 L3 = INTEGRAL CANOPY FIXTURE
 L4 = FLOOD LIGHT - COORDINATE HOISTING POSITION NOT TO ALIGN WITH CANOPY TIE-BACKS
- MF METAL FASCIA - SEE SECTIONS AND DETAILS
- X TYPE:
 1 = PRE-FAB. ANCHOR-TITE FASCIA, COLOR: CITYSCAPE
 2 = PRE-FAB. CUSTOM ARCADE FASCIA, COLOR: CITYSCAPE
- ML METAL LETTERING - BY OTHERS
- X TYPE:
 1 = "WELCOME" COLOR: SILVER
 2 = 24" H x 3/4" T METAL ARCH, COLOR: PAKTONE 123C
- MS EXISTING METAL SCREEN
- PS PIPE BOLLARD - PAINTED YELLOW
- PT PASS-THRU CON. COLLECTOR - OPTIONAL (18" HD)
- RD ROOF DRAIN OVERFLOW PIPE PAINT TO MATCH SURROUNDING MATERIAL
- S MCDONALD'S SIGNAGE BY OTHERS - UNDER SEPARATE PERMIT. SEE SIGNAGE SUPPORT NOTE ON THIS SHEET.
- TI ALUMINUM TRELLIS (PROVIDED BY MCDONALD'S AND INSTALLED BY G.C.)
- XX COLOR:
 C1 = CITYSCAPE
 C2 = WHITE
 C3 = CHARCOAL
 C4 = GOLD
- T2 ALUMINUM TRELLIS TIE-BACK
- XX COLOR:
 C1 = CITYSCAPE
 C2 = WHITE
 C3 = CHARCOAL
- T3 ALUMINUM TRELLIS 24" BALL FASCIA SYSTEM COLOR: CITYSCAPE
- TL BALL TILE - "BURNED" E-WOOD COLLECTION SIZE: 4" X 24" INSTALL AS 1/2" RAINING BOVD
- XX COLOR:
 C1 = R1 - OAK
 C2 = R1 - BLACK
- WATERPROOFING SETTING MATERIAL AND GROUT: BY HAPEI GROUT COLOR: ULTRA COLOR PLUS - 4" CHARCOAL GROUT JOINT: 1/8" TO 3/8"
- OUTSIDE CORNER STRIPS BY SCHLUTER SYSTEMS L.P. CONTACT: EARL THACKER, 891 334-3480 END OF TILE FIELD ABOVE BOOT AT ARCADE. CORNER TRIM: RONDEC ROODTSDA (DARK ANTHRACITE) ALUMINUM ID # ROBERT JOINT - DALEX BEMBOOS (BLACK)
- E1 EXTERIOR WINDOW ASSEMBLY
- 1 = NEW STOREFRONT AND GLAZING - SEE ASSEMBLY NOTES
- 2 = EXISTING WINDOW TO REMAIN

NO.	DATE	BY
1		
2		
3		
4		
5		
6		
7		



DRAWN BY: D.A.C.
 CHECKED BY: L.B.D.
 DATE DRAWN: 12/08/16

DATE ISSUED: AS NOTED
 SCALE: M-1/8"=1'-0"

EXTERIOR ELEVATIONS



288 East Main Road
 Middletown, Rhode Island

McDonald's USA, LLC

SHEET NUMBER: A2.1